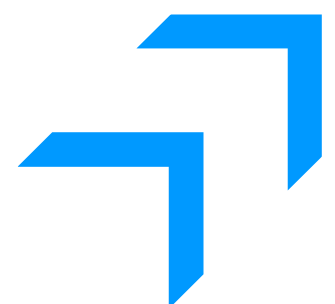
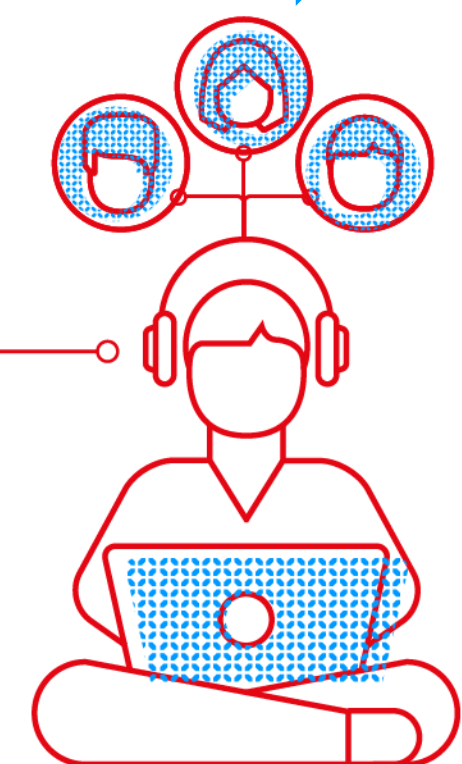
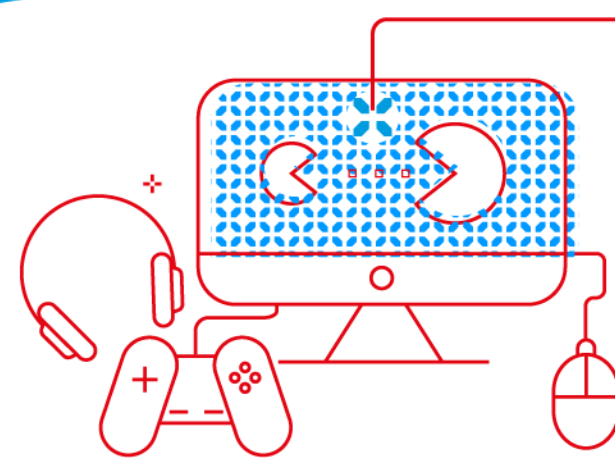
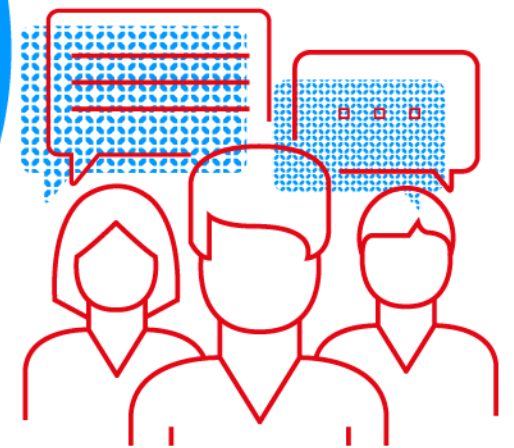
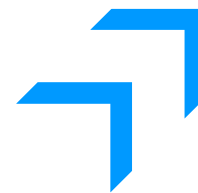


National PhD Welcome Day 2023!



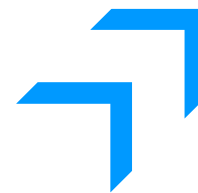
27 SEPTEMBER





A warm welcome to our new Doctoral Candidates!





Doctoral Education - Context



- “Salzburg principles”
 - Ten Basic principles for doctoral training (within Bologna process)
 - Doctorate = “Advancement of knowledge through original research work”
 - Widening for employment opportunities beyond academia.
- Internationally: Rapid transformation in the past two decades
 - Doubling of doctoral degrees awarded (but not of permanent academic positions !)
 - Career paths in and outside of academia
 - Doctoral school / training centre
- Doctoral candidates as early stage researchers, with appropriate funding and work contract
- Organisation in doctoral schools, promotion of transversal skills & interdisciplinarity, quality assurance
- Talent attraction to Uni.lu and Luxembourg
- Instrument for collaboration (national, international, PPPs and PPs)



UNIVERSITÉ DU
LUXEMBOURG



LUXEMBOURG
INSTITUTE OF SCIENCE
AND TECHNOLOGY



LISER

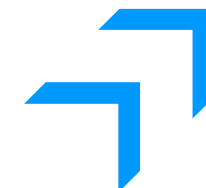


LUXEMBOURG
INSTITUTE
OF HEALTH

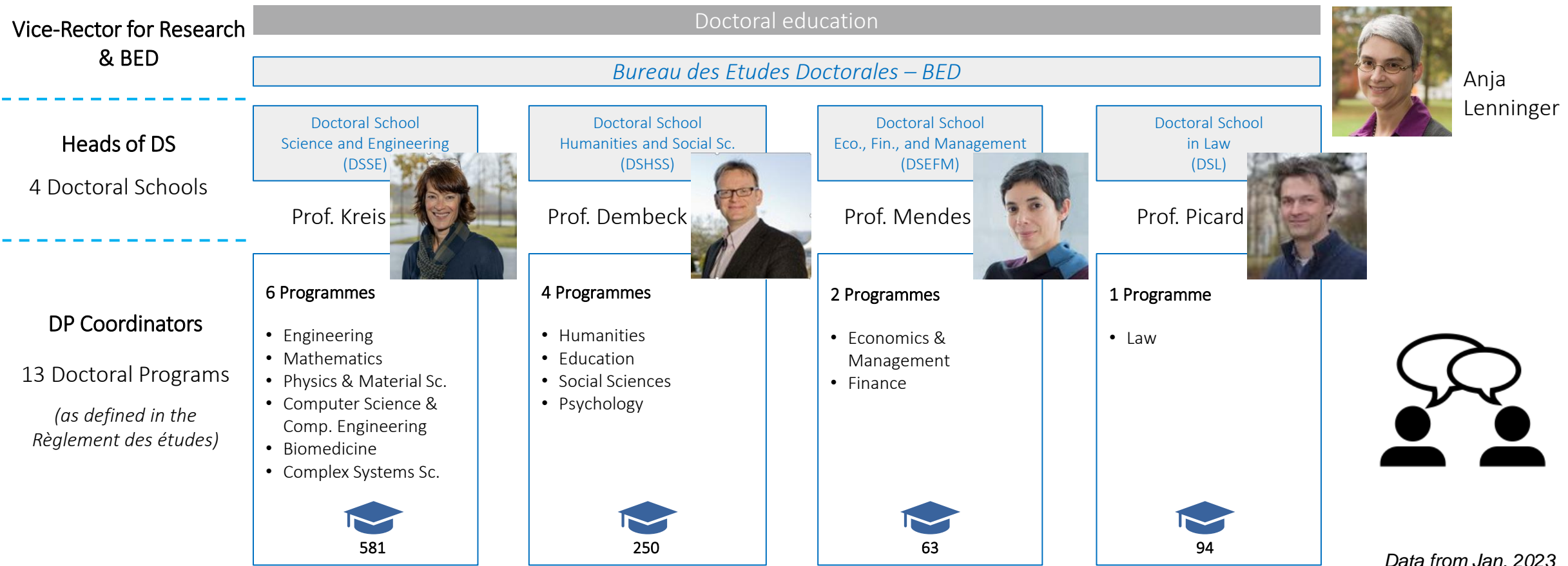


luxdoc
Luxembourg's Young Researchers Association





Organisation of Doctoral Education @ Uni.lu




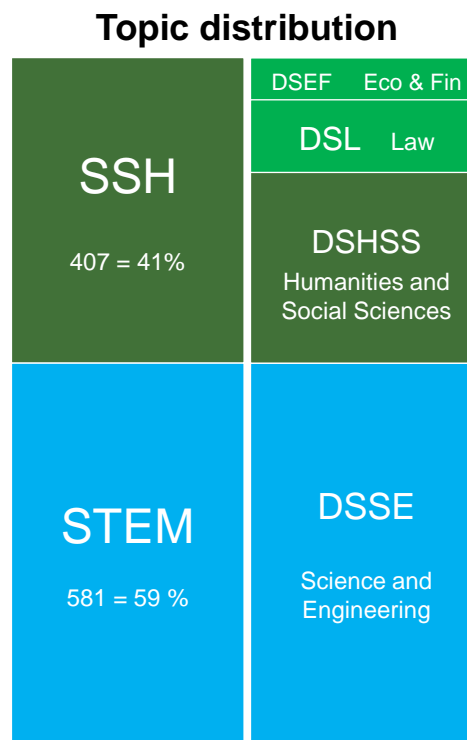
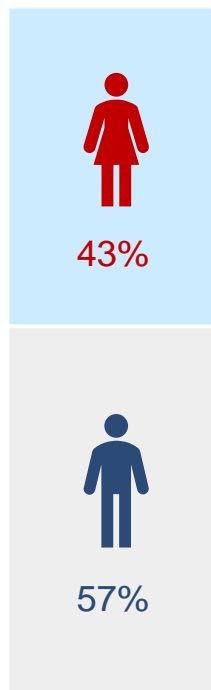
Data from Jan. 2023

Luxembourg: a great place for Doctoral Education!

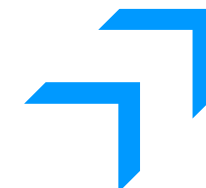


Young, international, interdisciplinary


~1000
PhDs



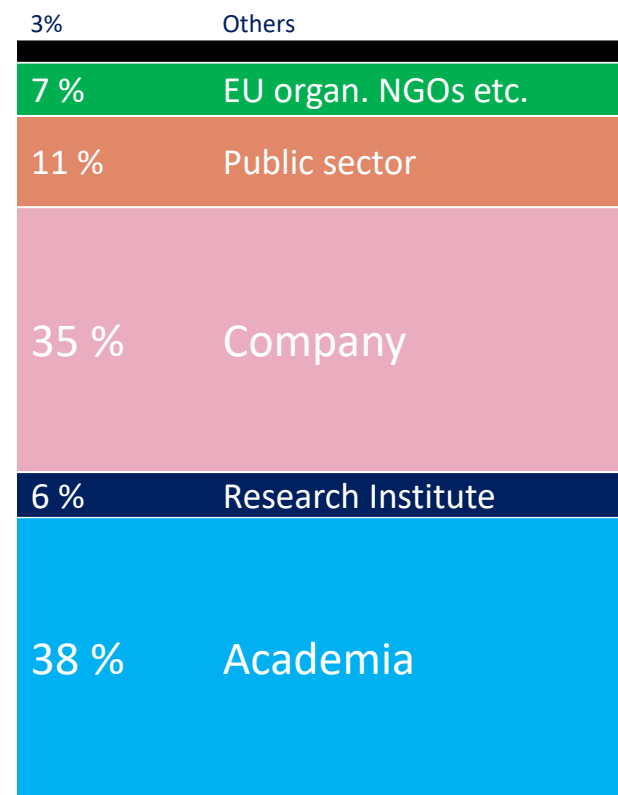
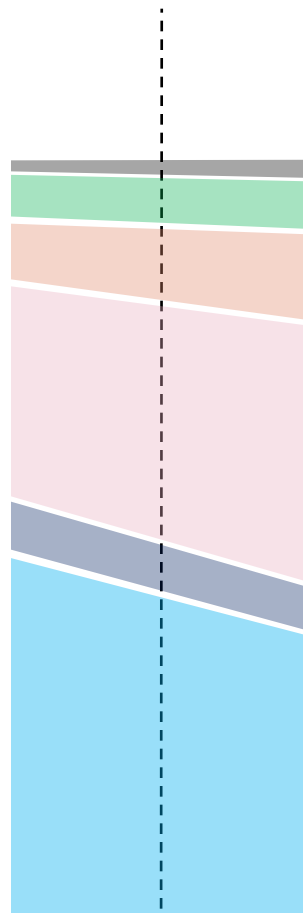
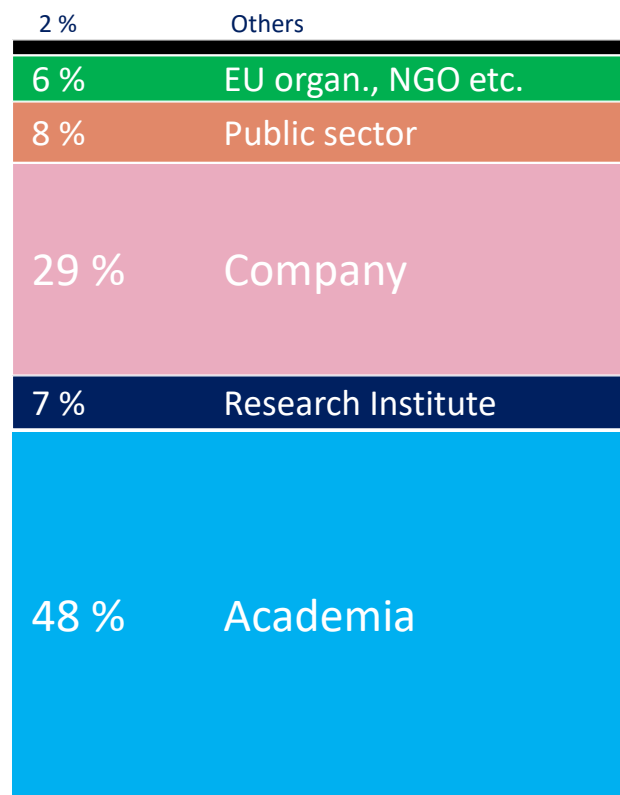
Data from 2022/23



Employment outlook for PhD graduates

1st Employment
(view for entire University)

Current Employment
(view for entire University)



"Employment of PhD Graduates 2006/2007 - 2017/2018", 60% response rate
 (Source: 2019 Analysis of UL's Office for Statistics and Institutional Research)



All the best for your doctoral journey!

