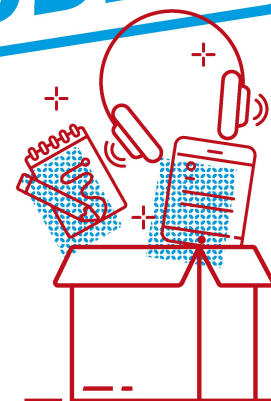
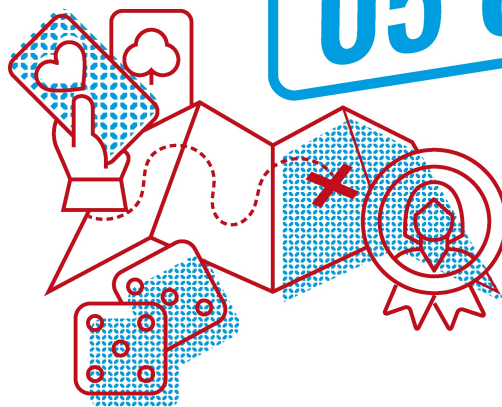


#doctoralux

**05 OCTOBER**



# Luxembourg: Research Landscape



**Hélène JACUSZIN**

Marketing &  
Communication  
Coordinator  
Research Luxembourg



**Aliénor DIDIER**

National Coordinator  
EURAXESS Luxembourg



# 1 RESEARCH LUXEMBOURG

1.1 AT A GLANCE

1.2 MEMBER ORGANISATIONS

1.3 THE STORY WE TELL

# 2 LUXEMBOURG NATIONAL RESEARCH FUND (FNR)

2.1 FUNDING SCHEMES

2.2 SUPPORT OF DOCTORAL TRAINING

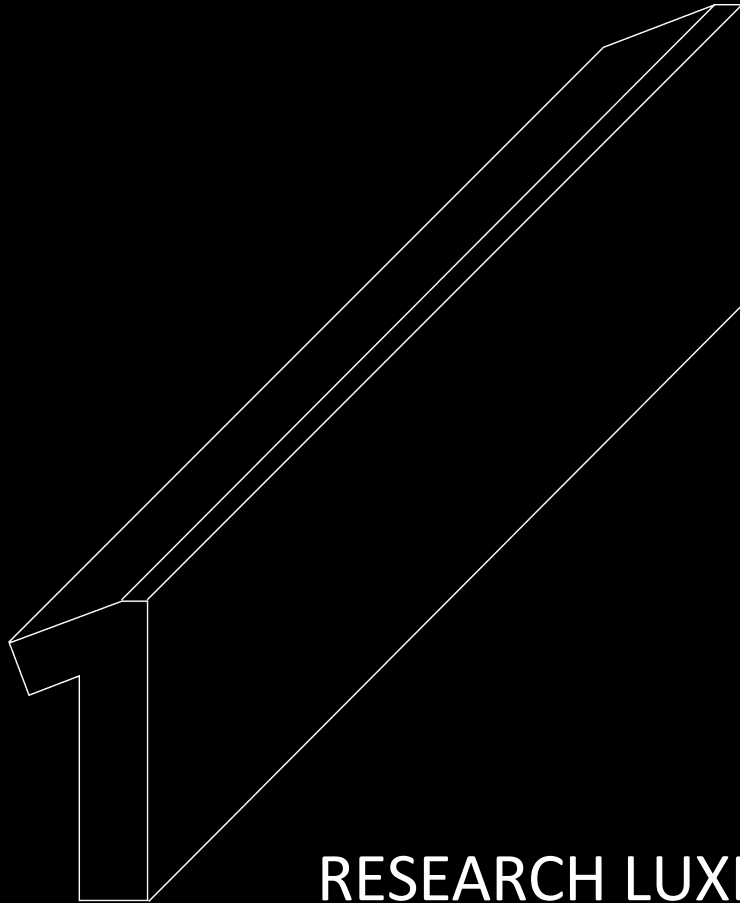
2.3 OUTREACH OPPORTUNITIES

# 3 EURAXESS

3.1 EURAXESS OFFER

3.2 RESOURCES & PERSONALISED ASSISTANCE

3.3 EURAXESS LUXEMBOURG INITIATIVES



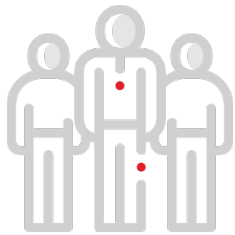
RESEARCH LUXEMBOURG



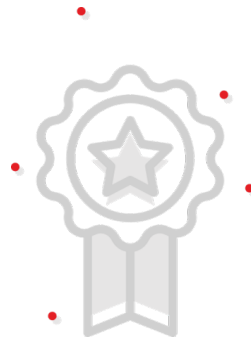


Highest allocations for R&D per capita in the EU in 2021, with €689 person  
(source: Eurostat)

• • • • •



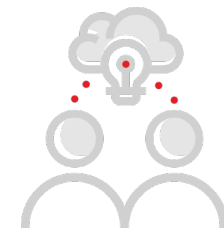
More than 2,700 R&D staff  
(source: STATEC 2019)



Most attractive research system  
(source: 2022 European Innovation Scoreboard)



Highest proportion of young adults with a diploma from a university or higher education institution in the EU  
(source: Eurostat)



980 PhD candidates  
(September 2022)

+17.6%

Research funding increase:  
from 1.47 billion for 2018-2021 to 1.7 billion € for the 2022 – 2025

---

## PUBLIC RESEARCH LANDSCAPE AT A GLANCE

---

- ✓ A formal national research and innovation strategy defining four priority areas
- ✓ Mission: make Luxembourg a sustainable, knowledge-driven, diverse and trusted digital society by 2030
- ✓ A living laboratory for AI
- ✓ Steadily growing public funding



- Data modelling
- Fintech and regtech
- Space

**INDUSTRIAL  
AND SERVICE  
TRANSFORMATION**

**SUSTAINABLE  
AND RESPONSIBLE  
DEVELOPMENT**

- Green transition & societal sustainability
- Sustainable construction & renewable energies
- Circular economy

**RESEARCH PRIORITY AREAS  
FOR THE NEXT TEN YEARS**

**PERSONALISED  
HEALTHCARE**

**21<sup>ST</sup> CENTURY  
EDUCATION**

- Translational medicine
- Disease prevention & behavioural changes
- Precision health

- Digital skills
- Lifelong learning
- Multilingualism & Equality

---

## RESEARCH LUXEMBOURG MEMBER ORGANISATIONS

---



Research Luxembourg is a unified agile team of thought leaders working to learn, explore and make an impact to shape a better future.

It is a joint initiative of the main actors in Luxembourg public research, with the support of the Ministry of Higher Education and Research:

- Luxembourg Institute of Health (LIH)
- Luxembourg Institute of Socio-Economic Research (LISER)
- Luxembourg Institute of Science and Technology (LIST)
- University of Luxembourg
- Luxinnovation
- Luxembourg National Research Fund (FNR)

**THE LUXEMBOURG  
INSTITUTE OF HEALTH  
(LIH)**



- ✓ Public biomedical research organisation with an Integrated Biobank of Luxembourg (IBBL)
- ✓ 419 employees including 221 scientists
- ✓ 4 priority research topics: Digital Health, Preventive Medicine, Clinical Research, Precision Health
- ✓ 2 priority disease areas: Cancer and Immunological disorders



**1.2 OUR MEMBER ORGANISATIONS**

**THE LUXEMBOURG  
INSTITUTE OF SOCIO-  
ECONOMIC RESEARCH  
(LISER)**



- ✓ An internationally recognised interdisciplinary research centre at the frontier of socio-economic research and societal innovation
- ✓ 187 staff members of more than 25 different nationalities
- ✓ 3 research departments: Living Conditions, Labour Market, Urban and Development Mobility
- ✓ 2 priority research programmes: Crossing Borders and Health & Health Systems





**THE LUXEMBOURG  
INSTITUTE OF SCIENCE  
AND TECHNOLOGY  
(LIST)**



- ✓ Research and Technology Organisation (RTO)
- ✓ Competitive and market-oriented product / service prototypes for public and private stakeholders
- ✓ 650 employees, 76% of whom are researchers or innovation experts
- ✓ 4 research priorities: IT, Environment, Materials and Space



**1.2 OUR MEMBER ORGANISATIONS**

## THE UNIVERSITY OF LUXEMBOURG



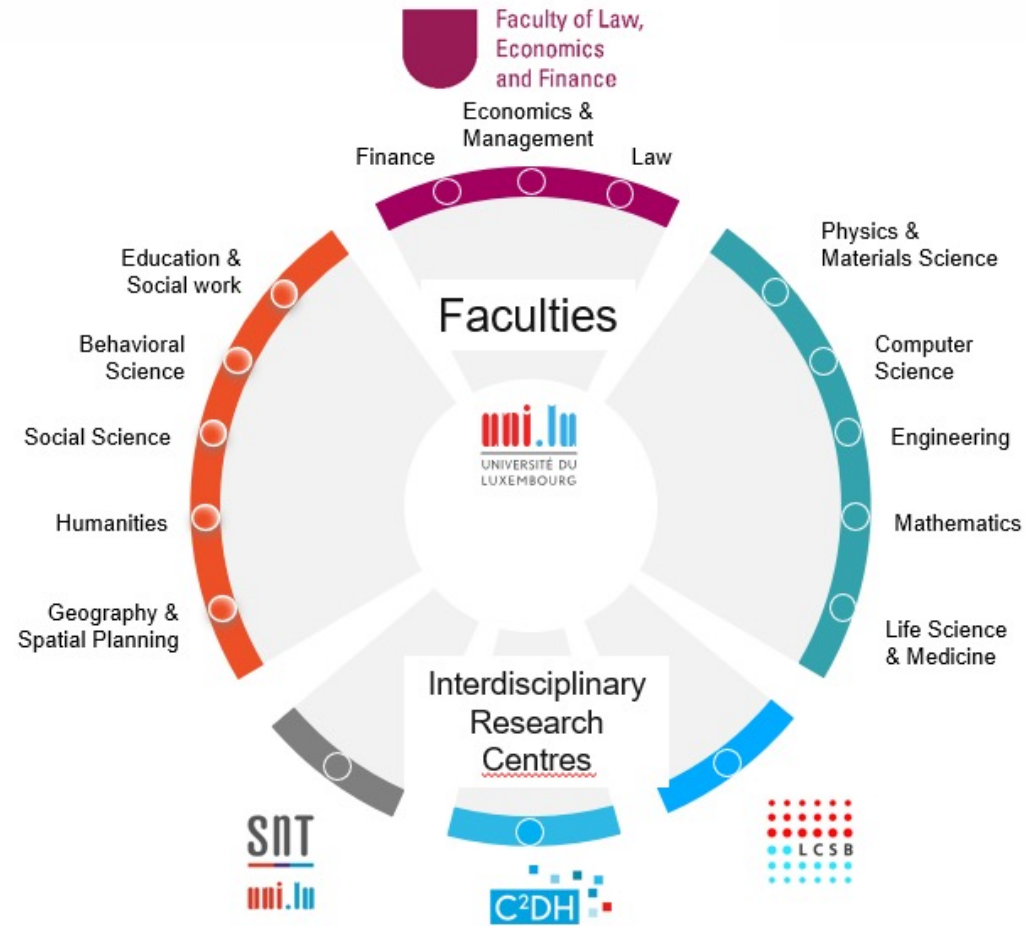
- ✓ A research university with a distinctly international outlook
- ✓ Approximately 7,000 students and 1,000 doctoral candidates
- ✓ Prominent rankings: among the top 300 universities worldwide in Times Higher Education World Ranking, and #25 in THE Young Universities Ranking
- ✓ 3 research priorities: Digital Transformation, Medicine & Health and Sustainable and Societal Development.



### 1.2 OUR MEMBER ORGANISATIONS



Faculty of Humanities,  
Education and  
Social Sciences



**THE LUXEMBOURG  
NATIONAL RESEARCH  
FUND  
(FNR)**



- ✓ The main funder of research activities in Luxembourg
- ✓ Promotion of Science in society
- ✓ Advises the government on research policy and strategy
- ✓ Strongly fosters national and cross-border collaborations and there collaborates with many funding agencies worldwide
- ✓ In 2021, FNR funded 226 research projects for a committed amount of 74.08 million euros

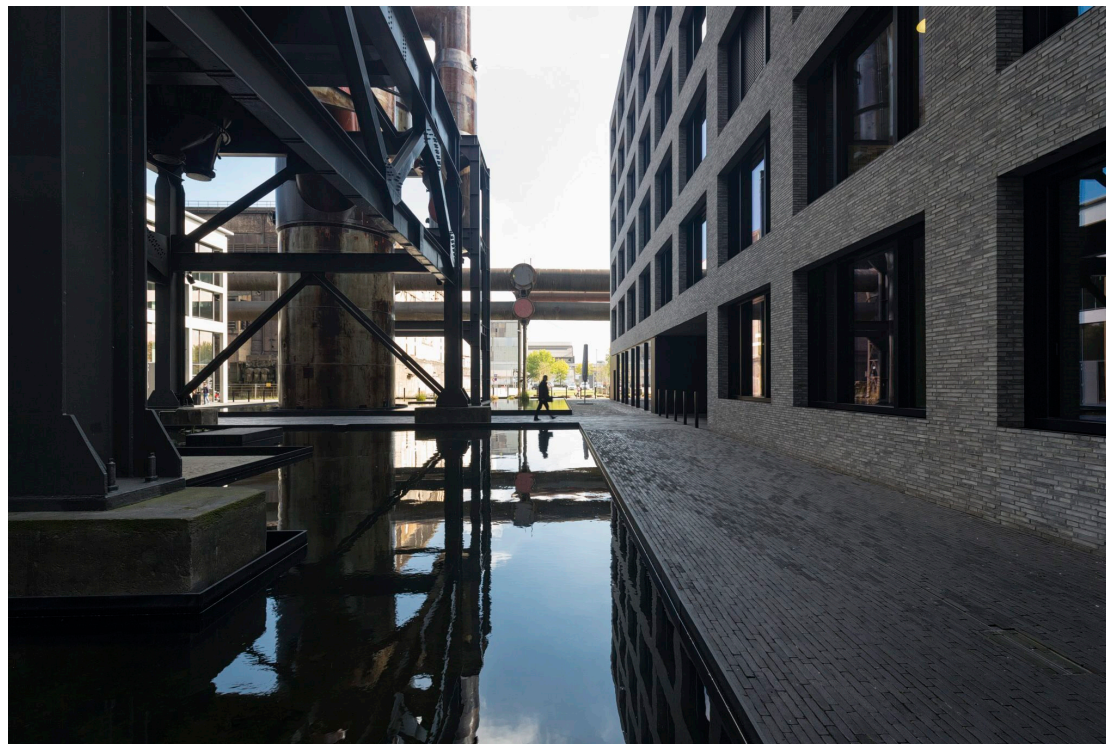


**1.2 OUR MEMBER ORGANISATIONS**

LUXINNOVATION



- ✓ The national innovation agency
- ✓ Key partner for start-ups and companies interested in launching innovative activities in Luxembourg
- ✓ A facilitator for major cooperation between investors and research & technology organisations



1.2 OUR MEMBER ORGANISATIONS



**WE ARE  
RESEARCH  
LUXEMBOURG**

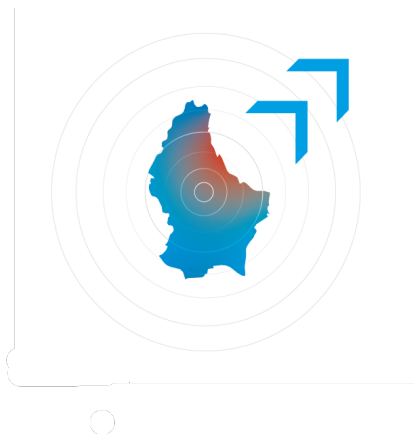


---

## OUR STORY

---

### ONE AGILE TEAM MAKING AN IMPACT TO SHAPE THE FUTURE



- ✓ Research Luxembourg has the ambition to become a leader in data-driven research and innovation
- ✓ Its mission is to connect all players, in Luxembourg and abroad, to create the best conditions in which talents can foster excellence
- ✓ Distinctive assets of Lux ecosystem:
  - close links between public institutions, industry and government
  - a strategic location at the heart of Europe
  - a proven governmental priority



### 1.3 THE STORY WE TELL

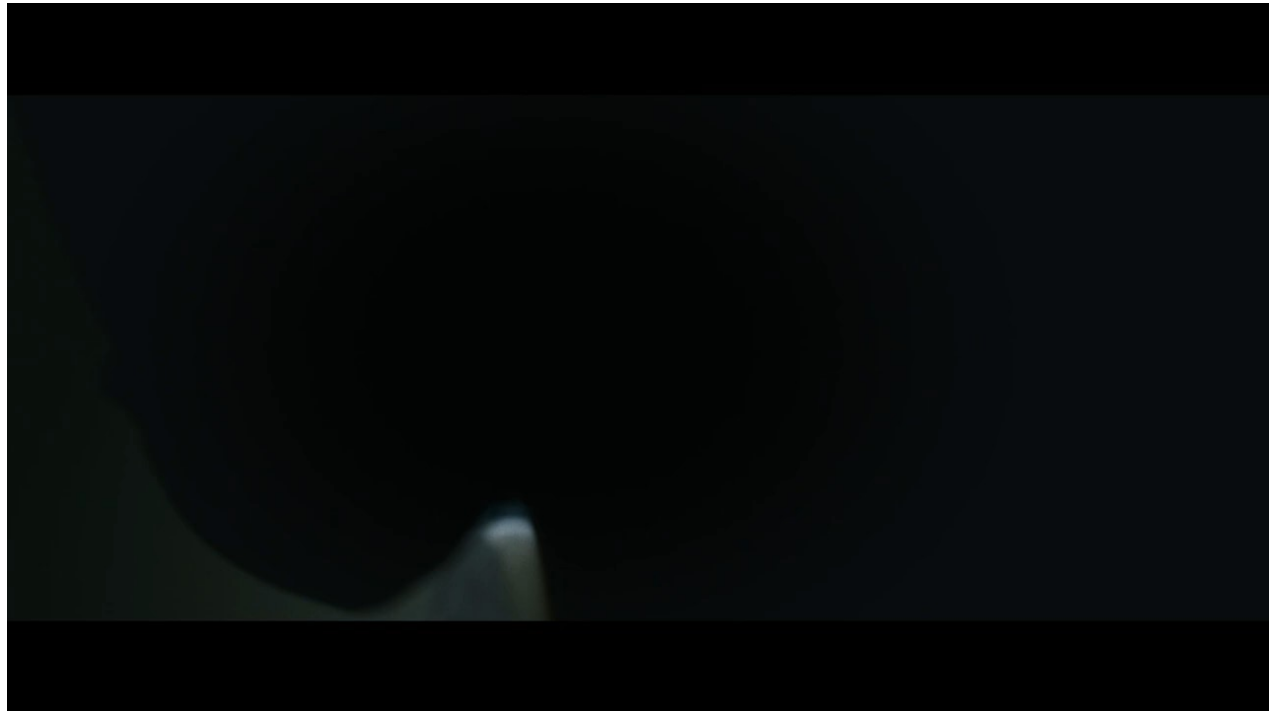


---

## THE RIGHT PLACE

---

- ✓ A communication campaign to attract new talents
- ✓ Human perspective: a lifestyle choice
- ✓ On social media and during missions abroad





LUXEMBOURG NATIONAL  
RESEARCH FUND (FNR)



## FUNDING BY CAREER STAGE OVERVIEW

		PHD	POSTDOC & JUNIOR	ESTABLISHED	LEADING
PROJECT FUNDING	Multi-annual thematic project funding		CORE Junior	CORE	
	Multi-annual project funding			OPEN	
	Funding for international research collaborations			INTER	
PEOPLE FUNDING	Grants to establish research groups in Luxembourg		ATTRACT Starting	ATTRACT Consolidator	
	Grants to establish research groups in Luxembourg				PEARL
	Research stays in Luxembourg & abroad			INTER MOBILITY	
	PhD grants in Luxembourg and abroad	AFR Individual & Bilateral			
PHD GRANTS	Block PhD grants	PRIDE			
		INDUSTRIAL FELLOWSHIPS			
INNOVATION & KNOWLEDGE TRANSFER SUPPORT	PhD & Postdoc grants for collaborations with industry				
	Block PhD & Postdoc grants for research collaborations with industry	IPBG			
	Public-private research collaborations		BRIDGES		
	Support for commercialisation of research results		JUMP (Pathfinder & Proof of Concept)		
	Support for knowledge & innovation transfer			KITS	
SCIENCE & RESEARCH COMMUNICATION SUPPORT	Support for open access publishing of research results	OPEN ACCESS FUND			
	Support for research communication			RESCOM	
	Support for promoting science to the public	PSP (Classic & Flagship)			

---

## NATIONAL QUALITY FRAMEWORK OF DOCTORAL TRAINING

---



## RESEARCH CULTURE – GOOD PRACTICE



Requirement  
for Open  
Access  
publication



Always  
acknowledge  
your funder

<https://royalsociety.org/science-events-and-lectures/2016/09/early-career-researcher-conference/>

---

## TRAVEL GRANTS & MOBILITY

---

### ✓ Lindau Call 2022

Discipline: Physiology and Medicine and closely related disciplines

DL: 14th October 2022



LINDAU  
NOBEL LAUREATE  
MEETINGS

### ✓ ESA Alpbach Summer School

Next Call in 2023

### ✓ ESOF

In 2024 in Katowice, Poland - Call in early 2024



### ✓ Fulbright

Grants for research visits at US academic institutions



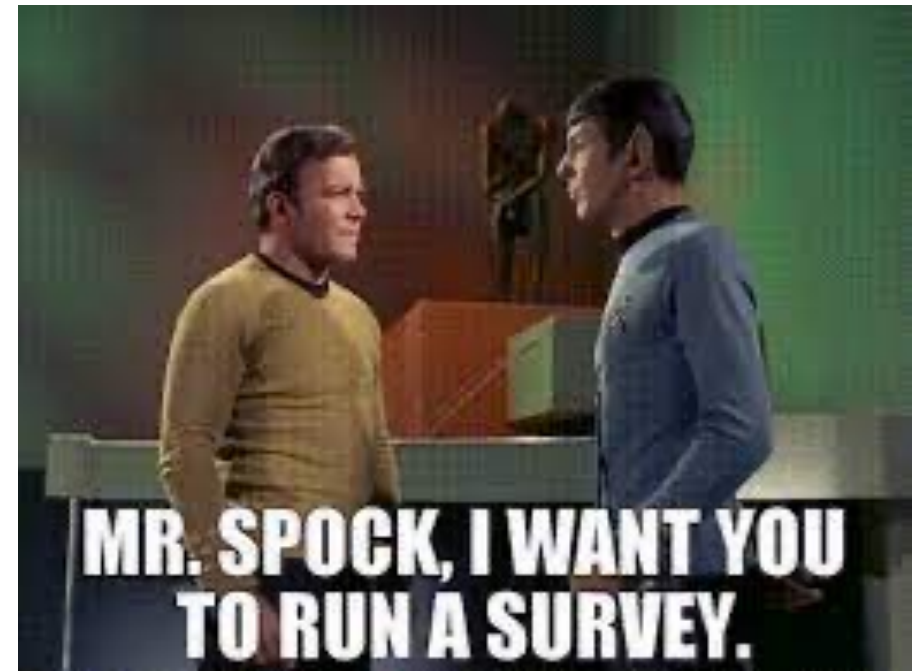
---

## FNR PHD SURVEYS (SCIENCE ON SCIENCE)

---

- ✓ The survey focuses on the aspirations, motivations and challenges of early career researchers
- ✓ It tracks researchers throughout their trajectory, i.e. pre-PhD, during PhD, post PhD graduation
- ✓ Strictly **confidential**
- ✓ Essential to provide **data for research on research**

➤ Your participation is invaluable: Thank you for helping us create a better research environment by replying to our surveys!



---

## YOUR FNR PROGRAMME MANAGERS

---



### ✓ Marie-Claude MARX

Coordinator of the **PRIDE** programme Coordinator of FNR matters related to doctoral training

### ✓ Asaël ROUBY

Coordinator of the **AFR** programme

### ✓ Richard NAKATH

Coordinator of the **Industrial Fellowship** programme





---

## SHOWCASING RESEARCH(ERS) IN LUXEMBOURG

---

- ✓ Annual FNR Awards for outstanding PhD thesis – 20 October



- ✓ Researchers Days – 25 & 26 November



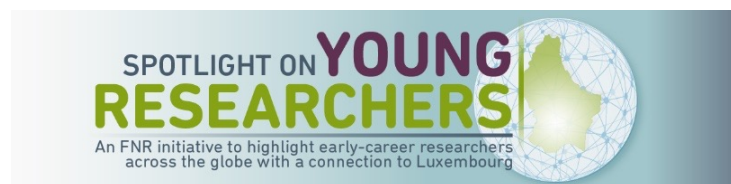
- ✓ “Chercheurs à l’école” – next edition in 2023



---

## SHOWCASING RESEARCH(ERS) IN LUXEMBOURG

---







---

## EURAXESS – WHAT OUR NETWORK OFFERS

---

**EURAXESS**

your research career at a click away



Browse thousands of job opportunities,  
funding and hosting offers

1

Get personalized assistance on mobility from  
645+ centres in 43 European countries

2

Find scientific collaboration partners through our  
Partnering Tool and EURAXESS Worldwide hubs  
beyond Europe

3

Free ACCESS.  
Free PERSONALISED ASSISTANCE  
[euraxess.ec.europa.eu](http://euraxess.ec.europa.eu)



**euraxess**  
RESEARCHERS IN MOTION

---

## EURAXESS LUXEMBOURG – FROM ONLINE INFORMATION TO PERSONALISED ASSISTANCE

---

**Researcher  
DeLUX?**  
**WE ARE HERE FOR YOU!**



EXPLORE! [www.euraxess.lu](http://www.euraxess.lu)



GET IN TOUCH! [euraxess@uni.lu](mailto:euraxess@uni.lu)



CONNECT! EURAXESS Luxembourg

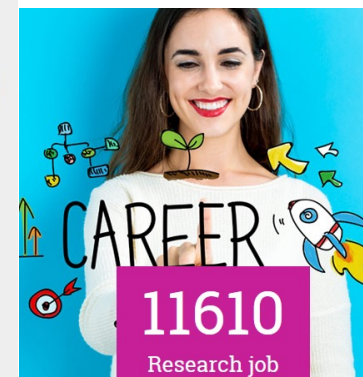


**21223**

Registered  
Organisations  
& Universities

**251**

Funding  
opportunities  
available



**11610**

Research job  
positions  
available

## EURAXESS WEBSITE – USEFUL INFORMATION AND RESOURCES A FEW CLICKS AWAY

**EURAXESS WEBSITE – USEFUL INFORMATION AND RESOURCES A FEW CLICKS AWAY**

**Navigation Bar:**

- Home
- JOB & FUNDING
- PARTNERING
- INFORMATION & ASSISTANCE
- LUXEMBOURG NETWORK
- MY EURAXESS
- Search
- Global

**Browse for funding:**

- Enter keywords
- RESEARCH FIELD
- FUNDING TYPE
- CAREER STAGE

**Career development resources for researchers:**

- Find personalised assistance
- Find information
- NEW TO CAREER DEVELOPMENT
- INDUSTRY AND ENTREPRENEURSHIP
- FIND TRAINING RESOURCES
- POLICY RECOMMENDATIONS

**CAREER DEVELOPMENT PLAN**

**Living in Luxembourg Section:**

- LIVING IN LUXEMBOURG**
  - Arrival checklist
  - Entry conditions and visas
  - Banking
  - Accommodation
  - Medical care
  - Family
  - Daily life
  - About Luxembourg
- WORKING IN LUXEMBOURG**
  - Research Landscape
  - Key actors in research
  - Social security
  - Taxation
  - Pension rights
  - Networking Associations
- LEAVING LUXEMBOURG**
  - Plan your career abroad
  - Job Opportunities
  - Funding Opportunities
  - Departure checklist

**Footer:**

- TESTIMONIALS >
- MORE INFORMATION >
- PERSONAL ASSISTANCE >



---

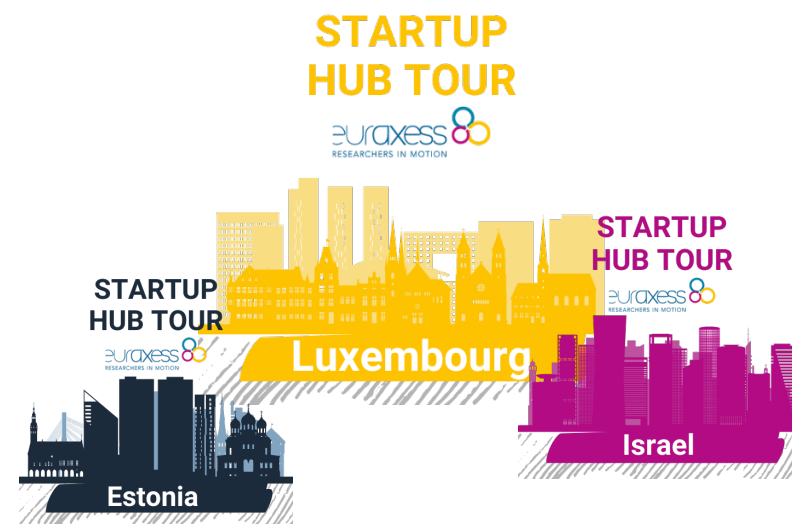
## EURAXESS LUXEMBOURG INITIATIVES – TAKE CONTROL OF YOUR CAREER

---

**SUPPORTING RESEARCHERS OPEN TO  
POSITIONS OUTSIDE ACADEMIA IN LUXEMBOURG**



**SUPPORTING SCIENCEPRENEURS EXPLORING  
OPPORTUNITIES IN LUXEMBOURG**



## EURAXESS TOPICS – THAT’S IN FOR OUR FOLLOWERS

### CAREER DEVELOPMENT TOOLS

**EURAXESS Luxembourg**  
2.309 Followerinnen  
2 Monate • Bearbeitet •

Free career development tools Which relevant skills for the labour market should PhD candidates develop? EURAXESS colleagues from Spain and Slovakia contributed to a project shedding light on this question for tran: ... mehr anzeigen

Übersetzung anzeigen



**DISCOVERY LEARNING:** fin  
youtube.com

**EURAXESS Luxembourg**  
2.309 Followerinnen  
6 Monate •

Ready for take-off? We invite you to visit the STARTUP NATIONS Israel Estonia on 2 funded tours if you are a (former) RESEARCHER working on g your startup (project) in Luxembourg Discover, together w ... mehr anzeigen

Übersetzung anzeigen



**STARTUP HUB TOUR**  
euraxess  
RESEARCHERS IN MOTION

**EURAXESS Startup Hub Tour**  
euraxess.rs • Lesedauer: 1 Min.

### CAREER DEVELOPMENT OPPORTUNITIES & TIPS

**EURAXESS Luxembourg**  
2.309 Followerinnen  
4 Tage •

Can third-country researchers claim unemployment benefit in Luxembourg?

Frequently raised by our researchers, we asked Alex Erpeldin: ... mehr anzeigen

Übersetzung anzeigen



**adem**  
INFO SESSION  
FOR EARLY-STAGE  
RESEARCHERS

**EURAXESS Luxembourg**  
2.309 Followerinnen  
4 Monate •

#2getthereluxembourg Transitioning from academia to corporate often entails a cultural change or even a shock. But PhDs have it all! ... mehr anzeigen

Übersetzung anzeigen



**Application training EURAXESS Luxembourg mentoring programme**  
euraxess.lu • Lesedauer: 3 Min.

### RESEARCH ECOSYSTEM ACTOR PORTRAITS

**EURAXESS Luxembourg**  
2.309 Followerinnen  
7 Monate • Bearbeitet •

Spotlight on Anja Lenninger team leader of the Office of Doctoral studies at the University of Luxembourg. If YOU are amongst the Luxembourg based doctoral candidates you ... mehr anzeigen

Übersetzung anzeigen



**Research Faces DeLUX**  
To support young researchers to accomplish their doctorate is what I like most about my job

Anja Lenninger

Anja LENNINGER Research Faces De  
euraxess.lu • Lesedauer: 2 Min.

**EURAXESS Luxembourg**  
2.309 Followerinnen  
1 Monat •

#ERCgrant European Research Council (ERC) Starting Grants The 2023 call is now open! ... mehr anzeigen

Übersetzung anzeigen



**FUNDING OPPORTUNITY  
ERC STARTING GRANTS**

ERC Starting Grants The 2023 call is now open!  
euraxess.lu • Lesedauer: 1 Min.

### FUNDING OPPORTUNITIES (ERC, MSCA ...)



---

THE STAGE IS YOURS – SHARE YOUR EXPERIENCE TO PROMOTE RESEARCH IN LUXEMBOURG!

---

GET TO KNOW YOUR FELLOW PHDS

HOW TO FIND ACCOMMODATION?

LEARNING LUXEMBOURG'S LANGUAGES

OPENING A BANK ACCOUNT

HOW TO GET MEDICAL CARE?

**BECOME A EURAXESS AMBASSADOR!**



---

## ONLINE COMMUNITIES

---



# [ResearchLuxembourg](https://www.researchluxembourg.org)



[researchluxembourg.org](https://researchluxembourg.org)



[euraxess.lu](https://euraxess.lu)



[Research Luxembourg](https://www.linkedin.com/company/researchluxembourg)



[EURAXESS Luxembourg](https://www.linkedin.com/company/euraxess-luxembourg)



[@ResearchLux](https://twitter.com/ResearchLux)



[@Euraxess.Luxembourg](https://www.facebook.com/Euraxess.Luxembourg)



[@ResearchLuxembourg](https://www.facebook.com/ResearchLuxembourg)



[EURAXESS Luxembourg](https://www.youtube.com/EURAXESSLuxembourg)



[Research  
Luxembourg](https://www.youtube.com/ResearchLuxembourg)



---

THANK YOU

---

✓ Hélène JACUSZIN

[helene.jacuszin@researchluxembourg.lu](mailto:helene.jacuszin@researchluxembourg.lu)

✓ Aliénor DIDIER

[alienor.didier@uni.lu](mailto:alienor.didier@uni.lu)

[euraxess@uni.lu](mailto:euraxess@uni.lu)





**Thank you for participating  
in the National PhD  
Welcome Day 2022!**

