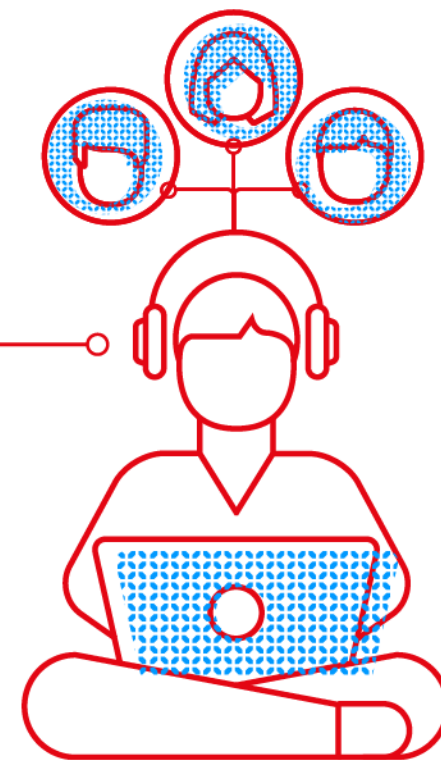
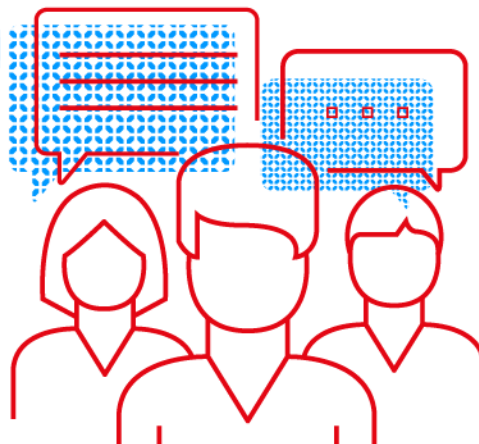
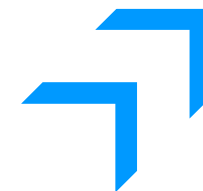


27 SEPTEMBER



# Student Delegation and Doctoral Student Representatives

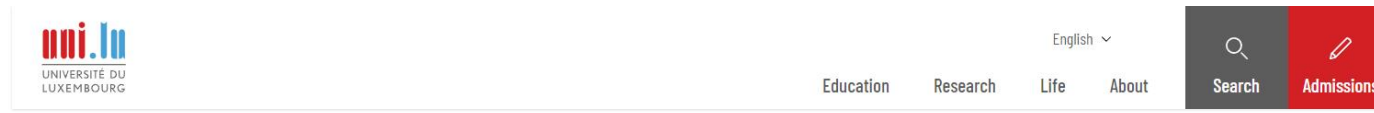


**What is the function of the Student Delegation (SD)?**

**Who are the student delegates?**

- Every SD has a 2-year mandate, and the first SD was created in 2018.
- Every 500 students create a quota in the SD → we exist because of you.
- Bachelor and master student delegates are elected from the three faculties (FDEF, FSTM, and FHSE).
- PhD student delegate(s) is(are) elected from all PhD students.
- Current composition: 2+2+3+**1**. , where 1 → 1062 (data acquired from relevant mailing lists).
- Our role ( [studentdelegation.uni.lu](http://studentdelegation.uni.lu) ): information (in general), assistance (activities), protection (conflict).

# Student Delegation



[University of Luxembourg](#) > [About](#) > [Governance](#) > [Student delegation](#)

## Student Delegation

The mission of the Student Delegation is to represent all students of the University and to defend and promote their interests related to the teaching at and the governance of the University.



[studentdelegation.uni.lu](https://studentdelegation.uni.lu)

[instagram.com/sduni.lu](https://instagram.com/sduni.lu)

## Representation



LUXEMBOURG  
INSTITUTE OF SCIENCE  
AND TECHNOLOGY



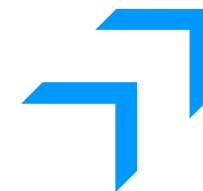
LISER



LUXEMBOURG  
INSTITUTE OF HEALTH



# Student Delegation and Doctoral Student Representatives

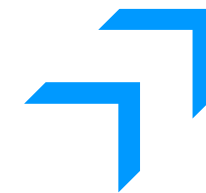


**Who are the doctoral student representatives?**

**What is the difference between a delegate and a representative?**

- Mission in common: academic related issue (procedures, problems, activities, special request, etc.)
- Election level: university / doctoral study programs
- Responsibility level: university / doctoral study programs
- Commitment of various committees: university / faculty (Faculty Council, Recruitment Committees, etc.)
- Commitment for the SD in different committees: University Council, Reasonable Adjustment Committee, Litigation Committee (University), Ethics Advisory Committee, Gender Equality Committee, etc.
- Collaboration between the SD and student associations and clubs: LGBTQ+, art, sports, sustainability, etc.
- Collaboration between the SD and other entities or agencies: the ombudspersons, LARI (Luxembourg Agency for Research Integrity), etc.

# Student Delegation and Doctoral Student Representatives



## Words from the Ombudsman, Prof. Dr. Brent EPPERSON

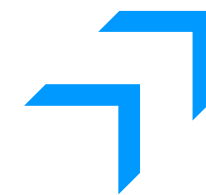
### Ombudsman

The Ombudsman's office is a confidential, impartial, independent and accessible place of support for the University community. The Ombudsman offers conflict management coaching, shuttle diplomacy, mediation, restorative circles and conferences to mitigate workplace conflicts. The Ombudsman also carries out presentations and workshops on healthy communication and conflict mitigation, conducts informal enquiries, and makes non-binding policy recommendations to all levels of University administration to address potential gaps and inequities.



- Conflict is everywhere.
- How to manage it matters.
- Communication is important.





# Upcoming Event—1st PhD Day by DP-CSCE

1st PhD Day

Doctoral Programme in Computer Science  
and Computer Engineering

05 OCTOBER 2023  
MSA 3.530, CAMPUS BELVAL

DCS DEPARTMENT OF COMPUTER SCIENCE SNT

- Details of the DP-CSCE PhD program.
- Experienced PhD students in their 2nd to 3rd years at DP-CSCE will present their scientific posters.



# Upcoming Event from the BED

## Greet Your Peers

- LLC: LH 1.01
- **Every Thursday from the 05/10 to 25/01 at 17.00 (until 18.30)**

Some other points:

- Identify your doctoral school secretary + BED referent today, (s)he will assist you along your doctoral studies
- Check out the TS courses currently opened for registration with the TS team

# Student Delegation—Campus Activities

